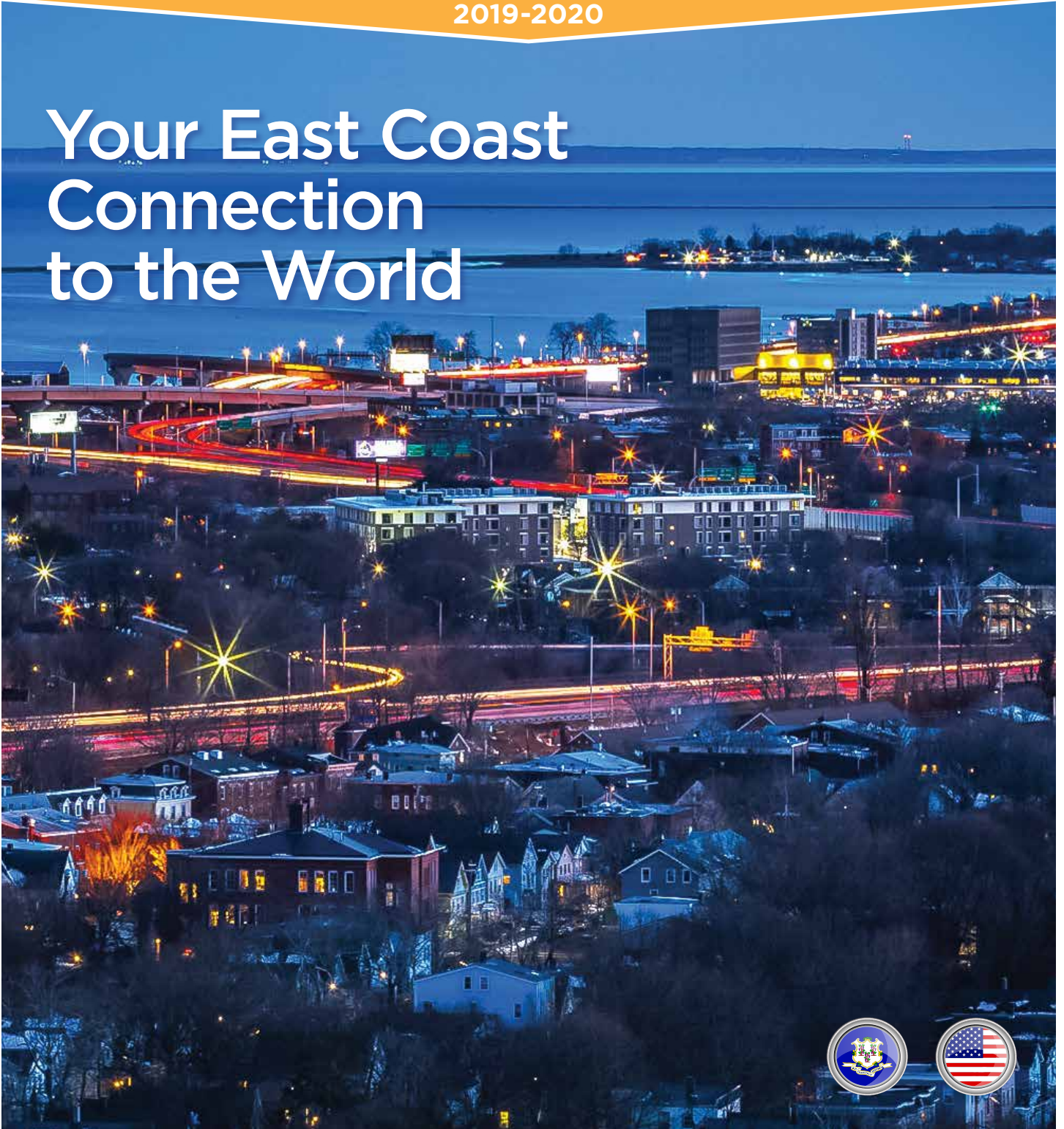


# South Central CONNECTICUT

2019-2020

## Your East Coast Connection to the World

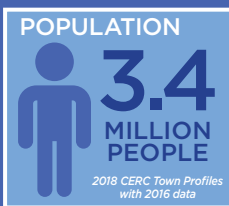
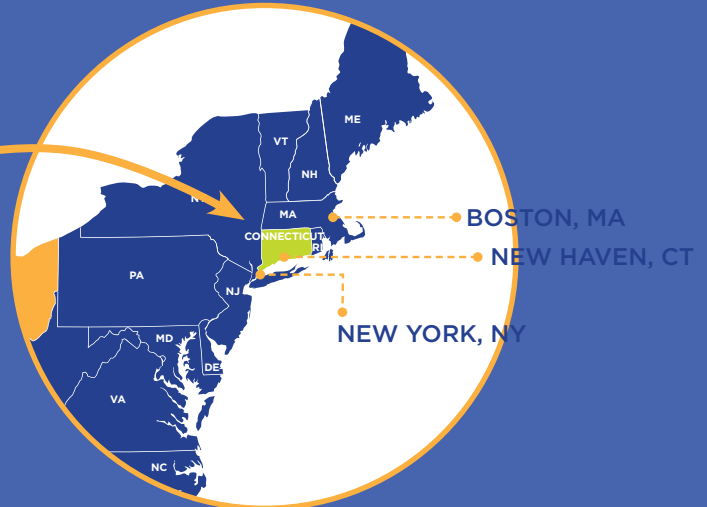
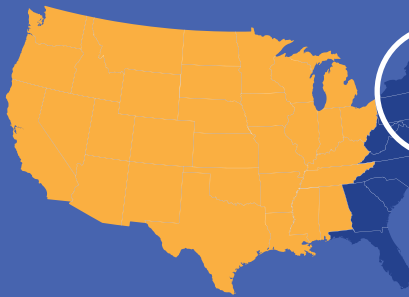


EDC NEW HAVEN/REX | PO Box 1576 | New Haven, CT 06506 | +1.203.785.1000 | [rexdevelopment.com](http://rexdevelopment.com)

Bethany | Branford | East Haven | Guilford | Hamden | Madison | Meriden | Milford | New Haven | North Branford | North Haven |  
Orange | Wallingford | West Haven | Woodbridge

1.0

# Connecticut - Gateway to New England



## USA COMPANY LOCATION:



## FOREIGN COMPANY INVESTORS:

Alstom, Assa Abloy, BIC,  
Volvo Aero, ING, MTU, UBS,  
Permasteelisa Group,  
Radiall

2.0

## Ready for the New Economy

With access to highly skilled talent and a strategic location, Connecticut features a dynamic and innovative economy that ranks in the Top 10 in the United States in these important categories:



Source: CT DECD 2018 Economic Development Strategy



EDC NEW HAVEN/REX | PO Box 1576 | New Haven, CT 06506 | +1.203.785.1000 | [rexdevelopment.com](http://rexdevelopment.com)

Bethany | Branford | East Haven | Guilford | Hamden | Madison | Meriden | Milford | New Haven | North Branford | North Haven | Orange | Wallingford | West Haven | Woodbridge

## Demographics

### Greater New Haven Area:

POPULATION

569,788



HOUSEHOLDS

220,490

MEDIAN HOUSEHOLD  
INCOME

\$66,893

MEDIAN SALES  
PRICES OF HOMES

\$210,000

(NEW HAVEN COUNTY)

WORKFORCE  
POPULATION

312,387

CT DOL December 2018

COLLEGE  
STUDENTS

51,600\*



Sources: U.S. Census Bureau, Berkshire Hathaway Home Services &amp; Connecticut Department of Labor

\*Sources: Yale Fact Sheet, SCSU Fact Sheet, UNH Fact Sheet, College Navigator

CONNECTICUT  
IS

#6

IN U.S. IN SCIENCE  
& ENGINEERING  
DOCTORATES IN  
THE WORKFORCE  
PER CAPITA

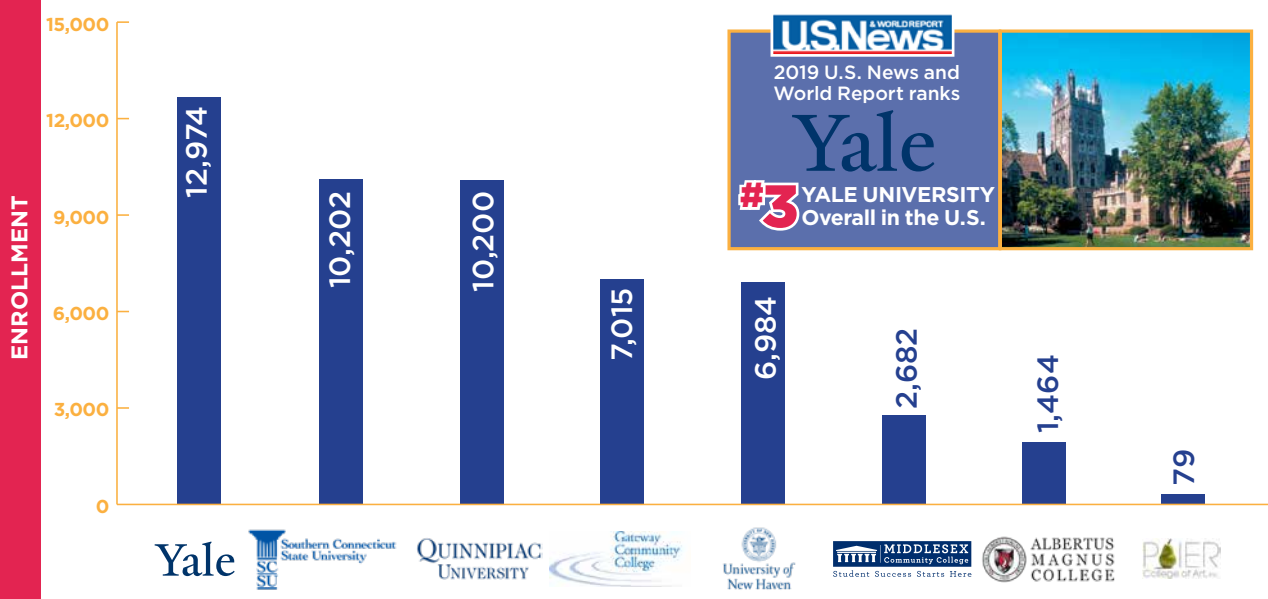
17.3%

% ADULTS IN CONNECTICUT  
WITH MASTER'S,  
PROFESSIONAL OR  
DOCTORAL DEGREE  
**#4 IN THE NATION**

Source: statsamerica.org

## Higher Education

There are eight colleges/universities located within the region with a total enrollment of **51,600** students, **50,000** employees and a total economic impact of over **\$2 billion**.



Source: College Navigator, December 2018

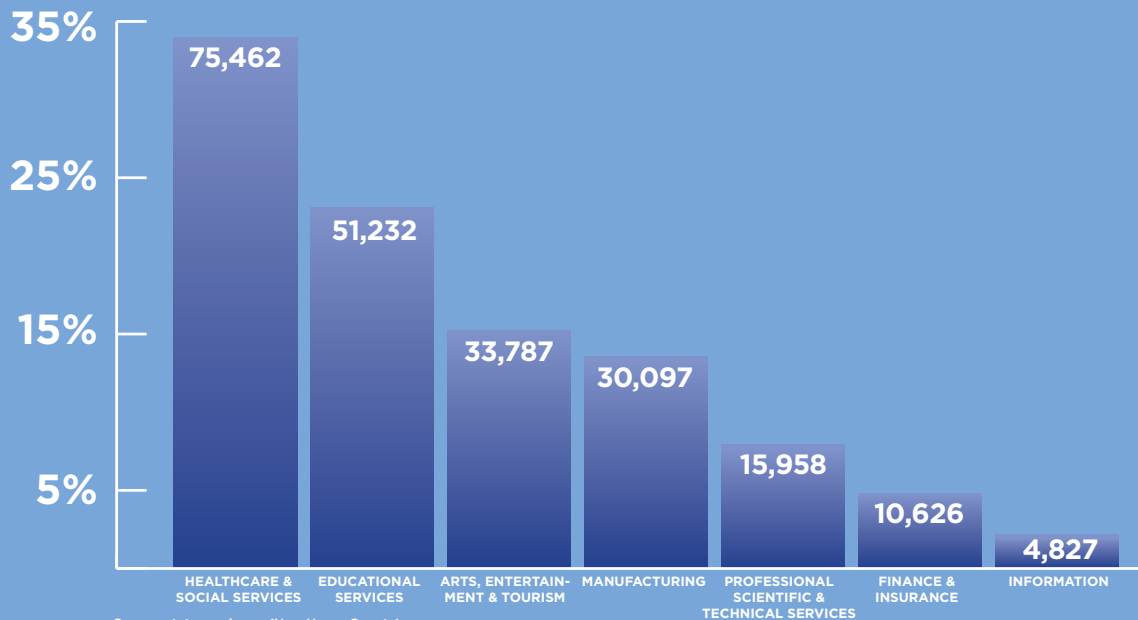
EDC NEW HAVEN/REX | PO Box 1576 | New Haven, CT 06506 | +1.203.785.1000 | [rexdevelopment.com](http://rexdevelopment.com)

Bethany | Branford | East Haven | Guilford | Hamden | Madison | Meriden | Milford | New Haven | North Branford | North Haven | Orange | Wallingford | West Haven | Woodbridge



## A Diverse and Growing Economy

### Share of Cluster Employment by Jobs:



### Leading Private Sector Employers in the Region

- AMAZON
- AMPHENOL CORP.
- ASSA ABLOY (SARGENT)
- AVANGRID
- HONEYWELL
- HUBBELL INC.
- KNIGHTS OF COLUMBUS INSURANCE
- MEDTRONIC
- PRATT & WHITNEY
- SIKORSKY
- SUBWAY WORLD HEADQUARTERS
- YALE NEW HAVEN HEALTH SYSTEM

SUBWAY®, OPENED IN 1965, IS HEADQUARTERED IN MILFORD, CT



Source: statsamerica.org (new Haven County)

## Key Sectors and Economic Drivers

**South Central Connecticut is a global leader in Advanced Manufacturing, Biomedical and Life Sciences, and emerging Information Technologies.**

### BIOMEDICAL AND LIFE SCIENCES:

Yale University and the Yale School of Medicine received nearly one-half billion dollars in National Institute of Health (NIH) funding during FY 2018, placing New Haven in a class with Seattle, Boston, Baltimore, Durham, Philadelphia and other cities with advanced research centers. With the Yale School of Medicine driving growth, Greater New Haven is the 2nd largest biotech cluster in New England. 1,400,000 patients treated annually. Over \$1B invested in the Bioscience sector in 2018.

Source: <https://report.nih.gov/award>

**ALEXION**



### ALEXION PHARMACEUTICALS:

Alexion recently leased half of a 495,000 s.f. research center at 100 College Street in the heart of the New Haven Medical District. Alexion is leading the science in rare disease treatments, with a market cap of over \$29 billion.

**ARTS, CULTURE & TOURISM:** New Haven is the cultural capital of Connecticut. With established businesses providing consistent demand, there are thirteen hotels in the development pipeline for 2019. According to the Connecticut State Office of Tourism's most recent statewide Tourism Tracker, the industry generates:

- \$14.7 billion in business sales supported by traveler spending
- \$1.7 billion in taxes generated by visitor activity
- 82,688 jobs directly related to tourism

**ADVANCED MANUFACTURING:** The region focuses on precision manufacturing in the security, medical device, telecommunications industries, as well as providing goods for the defense manufacturing pipeline.

### ASSA ABLOY

ASSA ABLOY, based in Sweden, is the global leader in access solutions. The company's North American base of operations is located in New Haven along with the company's Sargent manufacturing plant. Sargent builds locksets, cylinders, door closers, exit devices, electromechanical products and access control systems for commercial and industrial uses.

### Medtronic

MEDTRONIC - Approximately 1,500 of Medtronic's 85,000 entire workforce is based at the medical device manufacturing facility in North Haven, CT. Medtronic manufactures precision surgical equipment with innovative and minimally invasive solutions for health care professionals.

Source: <http://www.medtronic.com/us-en/about/news/quality-begins-with-me.html>

**IT/DIGITAL PLATFORMS:** Taking an innovative approach to quantum information science with the creation of the Yale Quantum Institute, Yale's pioneering research now includes quantum computing, data security, and applied physics at the quantum scale. In 2019, Yale startup company Quantum Circuits Inc. (QCI) opened its New Haven development and testing facility for quantum computing.

## 6.0

# Investing in Transportation & Logistics

In 2018, the state launched the New Haven-Hartford-Springfield rail line providing excellent transportation service through the center of the state into Massachusetts.

**Aspirational:** The new governor's agenda rail transportation goals of 30 minutes between New Haven and both Hartford and Stamford and a 60 minute commute between New Haven and New York.

Study by the Army Corps of Engineers to determine the value to deepen the Port of New Haven to 40+ feet. The Port of New Haven is the busiest port on Long Island Sound and holds the potential for significant future growth.



## Utilities:

**EVERSOURCE**

**Regional Water Authority**

**Connecticut Water**

**Southern Connecticut Gas**  
Service First!

**ui**  
The United Illuminating Company

**WALLINGFORD ELECTRIC**

**Yankee Gas**  
The Northeast Utilities System

EDC NEW HAVEN/REX | PO Box 1576 | New Haven, CT 06506 | +1.203.785.1000 | [rexdevelopment.com](http://rexdevelopment.com)

Bethany | Branford | East Haven | Guilford | Hamden | Madison | Meriden | Milford | New Haven | North Branford | North Haven | Orange | Wallingford | West Haven | Woodbridge

7.0

# Investing in Innovation

## CONNECTICUT

RANKED **#4**

IN THE U.S. FOR PRIVATE R&D  
INVESTMENT PER CAPITA  
(TWICE THE NATIONAL AVERAGE)\*



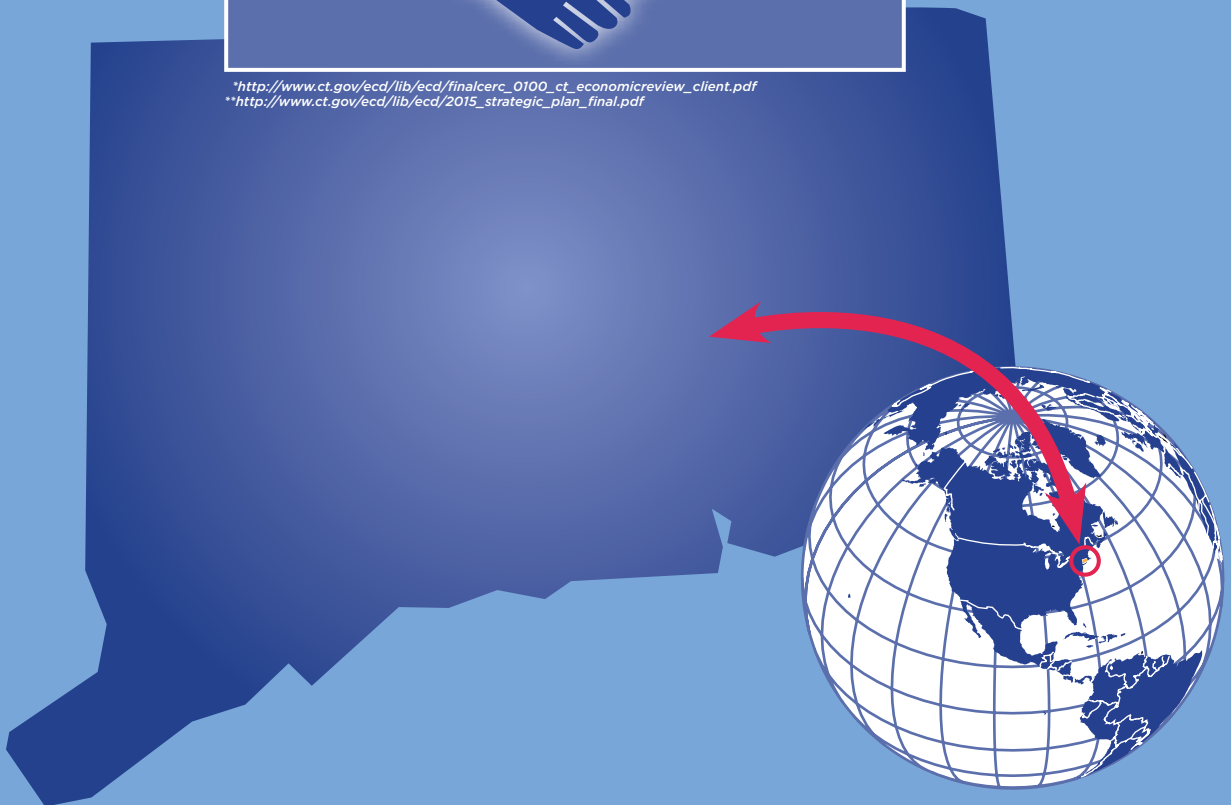
## CONNECTICUT

RANKED **#8**

IN THE U.S. FOR PRIVATE VENTURE  
CAPITAL DEALS PER CAPITA\*



\*[http://www.ct.gov/ecd/lib/ecd/finalcerc\\_0100\\_ct\\_economicreview\\_client.pdf](http://www.ct.gov/ecd/lib/ecd/finalcerc_0100_ct_economicreview_client.pdf)  
\*\*[http://www.ct.gov/ecd/lib/ecd/2015\\_strategic\\_plan\\_final.pdf](http://www.ct.gov/ecd/lib/ecd/2015_strategic_plan_final.pdf)



EDC NEW HAVEN/REX | PO Box 1576 | New Haven, CT 06506 | +1.203.785.1000 | [rexdevelopment.com](http://rexdevelopment.com)

Bethany | Branford | East Haven | Guilford | Hamden | Madison | Meriden | Milford | New Haven | North Branford | North Haven |  
Orange | Wallingford | West Haven | Woodbridge



## 8.0

# Lifestyle & Leisure

Within the region, residents can choose a variety of lifestyles; urban, suburban, rural, shoreline and more. The compact geography of the region gives residents simple options for working in one town while living in another.

As Connecticut is often considered a traditional New England state, one of the most unexpected characteristics of Greater New Haven is its ethnic and cultural diversity. Our key industries attract talent from around the world and it is reflected in our communities.

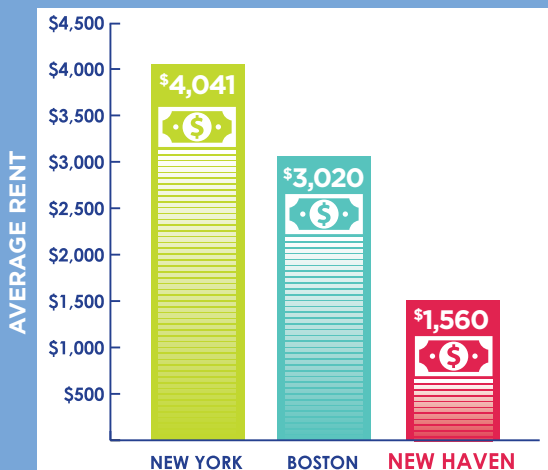


## 9.0

# Housing Options

### Cost of Living Comparison:

On its own, Greater New Haven is an awesome place to live. But if you had your heart set on Boston or New York, remember Greater New Haven is the epicenter of these two cities at approximately one-half the rental price according to December 2018 data from rentcafe.com.



**EDC**  
New Haven

**REX**

**SCRCOG**  
SOUTH CENTRAL REGIONAL  
COUNCIL OF GOVERNMENTS

**MNH**  
Market New Haven, Inc.

**City of New Haven**  
Mayor Toni N. Harp  
Board of Alders

**EDC NEW HAVEN/REX** | PO Box 1576 | New Haven, CT 06506 | +1.203.785.1000 | [rexdevelopment.com](http://rexdevelopment.com)

Bethany | Branford | East Haven | Guilford | Hamden | Madison | Meriden | Milford | New Haven | North Branford | North Haven | Orange | Wallingford | West Haven | Woodbridge